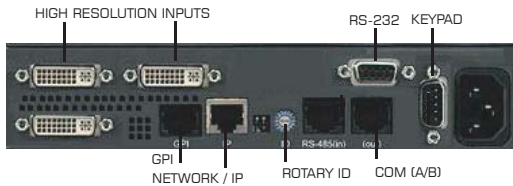


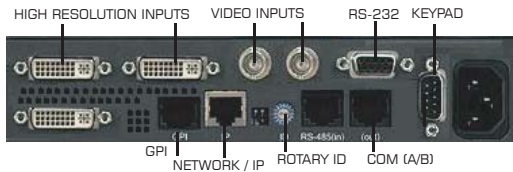
RAINIER SERIES

Entry-Level Multi-Image VGA / DVI & Video

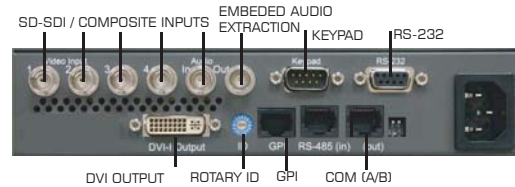
RAINIER - 2v



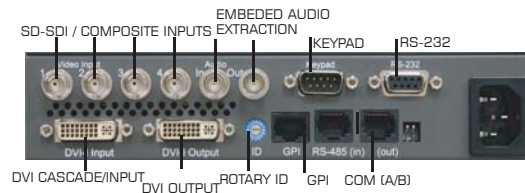
RAINIER - 2a2v



RAINIER - 4a / 4d



RAINIER - 4a1v / 4d1v



RAINIER - 2v

- Input: 2 auto-detect VGA / DVI (YPbPr) 480P 60 Hz, 720P 50/60 Hz, 576P 50 Hz, and 1080i 50/60 Hz
- Output Resolution up to 1600x1200 / 1920x1080 / 1920x1200
- Up to 26 internal presets
- On-screen labels, borders

RAINIER 2a2v

- Input: 2 auto-detect VGA / DVI (YPbPr) 480P 60 Hz, 720P 50/60 Hz, 576P 50 Hz, and 1080i 50/60 Hz PLUS 2 auto-detect composite video (PAL / NTSC)
- Output Resolution up to 1600x1200 / 1920x1080 / 1920x1200
- Up to 26 internal presets
- On-screen labels, borders

RAINIER - 4a

- Input: 4 auto-detect composite video (PAL / NTSC)
- Output Resolution DVI / VGA up to 1366 x 768 / 1440 x 900 / 1400 x 1050
- Up to 26 internal presets
- On-screen labels, borders
- Supports direct TSL Tally Interface

RAINIER - 4a1v

- Input: 4 auto-detect composite video (PAL / NTSC) PLUS 1 auto-detect VGA / DVI (YPbPr) 480P 60 Hz, 720P 50/60 Hz, 576P 50 Hz, and 1080i 50/60 Hz
- Output Resolution up to 1600x1200 / 1920x1080 / 1920x1200
- Up to 26 internal presets
- On-screen labels, borders
- Supports direct TSL Tally Interface

RAINIER - 8a1v

- Input: 8 auto-detect composite video (PAL / NTSC) PLUS 1 auto-detect VGA / DVI (YPbPr) 480P 60 Hz, 720P 50/60 Hz, 576P 50 Hz, and 1080i 50/60 Hz
- Output Resolution up to 1600x1200 / 1920x1080 / 1920x1200
- Up to 26 internal presets
- On-screen labels, borders
- Supports direct TSL Tally Interface

RAINIER - 12a1v

- Input: 12 auto-detect composite video (PAL / NTSC) PLUS 1 auto-detect VGA / DVI (YPbPr) 480P 60 Hz, 720P 50/60 Hz, 576P 50 Hz, and 1080i 50/60 Hz
- Output Resolution up to 1600x1200 / 1920x1080 / 1920x1200
- Up to 26 internal presets
- On-screen labels, borders
- Supports direct TSL Tally Interface

RAINIER - 16a1v

- Input: 16 auto-detect composite video (PAL / NTSC) PLUS 1 auto-detect VGA / DVI (YPbPr) 480P 60 Hz, 720P 50/60 Hz, 576P 50 Hz, and 1080i 50/60 Hz
- Output Resolution up to 1600x1200 / 1920x1080 / 1920x1200
- Up to 26 internal presets
- On-screen labels, borders
- Supports direct TSL Tally Interface

RAINIER - 4d

- Input: 4 auto-detect SD-SDI / composite video (PAL / NTSC)
- Output Resolution DVI / VGA up to 1366 x 768 / 1440 x 900 / 1400 x 1050
- Up to 26 internal presets
- On-screen labels, borders
- Audio Meters for Embedded Audio
- Supports direct TSL Tally Interface

RAINIER - 4d1v

- Input: 4 auto-detect SD-SDI / composite video (PAL / NTSC) PLUS 1 auto-detect VGA / DVI (YPbPr) 480P 60 Hz, 720P 50/60 Hz, 576P 50 Hz, and 1080i 50/60 Hz
- Output Resolution up to 1600x1200 / 1920x1080 / 1920x1200
- Up to 26 internal presets
- On-screen labels, borders
- Audio Meters for Embedded Audio
- Supports direct TSL Tally Interface

RAINIER - 8d1v

- Input: 8 auto-detect SD-SDI / composite video (PAL / NTSC) PLUS 1 auto-detect VGA / DVI (YPbPr) 480P 60 Hz, 720P 50/60 Hz, 576P 50 Hz, and 1080i 50/60 Hz
- Output Resolution up to 1600x1200 / 1920x1080 / 1920x1200
- Up to 26 internal presets
- On-screen labels, borders
- Audio Meters for Embedded Audio
- Supports direct TSL Tally Interface

RAINIER - 12d1v

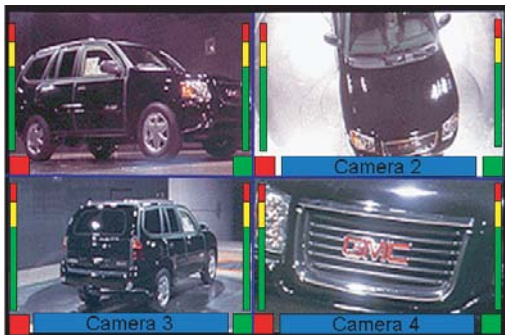
- Input: 12 auto-detect SD-SDI / composite video (PAL / NTSC) PLUS 1 auto-detect VGA / DVI (YPbPr) 480P 60 Hz, 720P 50/60 Hz, 576P 50 Hz, and 1080i 50/60 Hz
- Output Resolution up to 1600x1200 / 1920x1080 / 1920x1200
- Up to 26 internal presets
- On-screen labels, borders
- Audio Meters for Embedded Audio
- Supports direct TSL Tally Interface

RAINIER - 16d1v

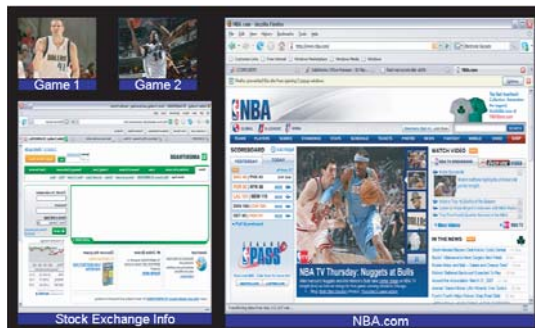
- Input: 16 auto-detect SD-SDI / composite video (PAL / NTSC) PLUS 1 auto-detect VGA / DVI (YPbPr) 480P 60 Hz, 720P 50/60 Hz, 576P 50 Hz, and 1080i 50/60 Hz
- Output Resolution up to 1600x1200 / 1920x1080 / 1920x1200
- Up to 26 internal presets
- On-screen labels, borders
- Audio Meters for Embedded Audio
- Supports direct TSL Tally Interface

RAINIER SERIES

Entry-Level Multi-Image VGA / DVI & Video



RAINIER 4d - 4 auto-detect SD-SDI / composite video (PAL / NTSC)



RAINIER 2a2v - 2 auto-detect VGA / DVI (YPbPr)
PLUS 2 auto-detect composite video (PAL / NTSC)



Set-Top Box 1080P Input

Computer 1080P Background Input

RAINIER 2v - 2 auto-detect VGA / DVI (YPbPr)



RAINIER 8d1v - 8 auto-detect SD -SDI / composite video (PAL / NTSC) PLUS 1 auto-detect VGA / DVI (YPbPr)

General Specifications

- Supports Avitech ASCII Protocol (AAP)
- Compatible with Galaxy control software
- Supports Avitech Simple Control Panel (MCC-SCP)
- Any image can be made to display at full-screen
- 8 GPI for tally or preset recalls
- Communication via RS-232
- Rainier-2v and Rainier-2a2v also support IP
- Dimensions:
Rainier-2v, 2a2v, 4a, 4a1v, 4d, 4d1v
1/2 rack, 8" W x 10" D, 20.3cm W x 25.4cm D
Rainier-8a1v, 8d1v
1 RU, 19" W x 10" D, 48.3cm W x 25.4cm D
Rainier-12a1v, 12d1v, 16a1v, 16d1v
2 RU, 19" W x 10" D, 48.3cm W x 25.4cm D

Weight & Power:

- Rainier-2v, 2a2v, 4a, 4a1v, 4d, 4d1v: 5 lbs, 2.3 Kgs. <15W
- Rainier-8a1v, 8d1v: 10 lb, 4.55 Kgs., <30W
- Rainier-12a1v, 12d1v: 15 lb, 6.82 Kgs., <45W
- Rainier-16a1v, 16d1v: 20 lb, 9.09 Kgs., <60W

RAINIER OPTIONS INCLUDE:

- RAINIER-Blank - Blank front panel to attach to a single 1/2 RU for Rainier Series
- RAINIER-RMT - Rackmount for 2 1/2 RU for Rainier Series
- DVII-DB15 - DVI to VGA connector
- YPbPr - DVI to YPbPr breakout cable
- S-Video Adaptor
- Rear-mount kit

HEADQUARTERS

Avitech International Corporation
15333 NE 90th Street
Redmond, WA 98052-3561
USA

Phone: +1 (425) 885 3863

Toll Free: +1 (877) AVITECH (284-8324)

Fax: +1 (425) 885-4726

E-Mail: info@avitechvideo.com

Press & Media: Delamere Marketing

admin@delameremarketing.com

© Copyright 2007 Avitech International Corporation. All Rights Reserved

Specifications subject to change without notice

www.avitechvideo.com

MONITORING MADE EASY™